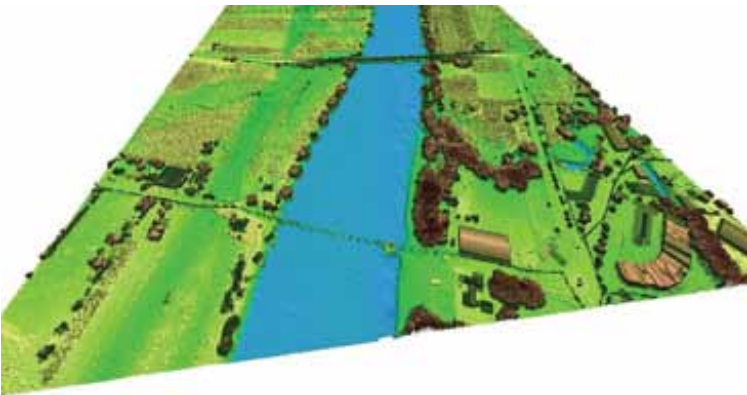


3D Digital Terrain Model of Ba Town, Fiji Islands, rendered from LiDAR data



The field verification of the 1: 10, 000 Agriculture Mapping in Fiji in Navosa, Fiji Islands.



Copter UAVs allow heavier payloads compared to fix wing UAVs, convertible payload and controllable camera mounting in any direction. They also allow different flight patterns where fix wing UAVs are limited.



Trimble Fixed Wing UAV



Since the inception of Pacific GIS/RS User Conference in 1999, this annual event has attracted a lot of participants from as far as the Americas to the sunny islands most of us call home. Each year the range of GIS/RS technologies presented cover an array of applications including the management of resources of the small island Pacific nations.

For more information about how you can participate in the conference, please visit the web site or email: gisconf@sopac.org
25th - 27th November with Parallel Sessions on 26th Novmeber

24th November
ESRI User Meeting

28th November
Revised for Workshop

29th November
Picnic at Sandbank in Suva Reef,
Final Cocktail 27th in the evening



<http://picgisrs.appspot.com>



**Empowering Pacific
Communities through
Improved Geospatial
Data**

**25th - 27th November 2014
Suva, Fiji Islands**



Connecting the Pacific with Maps

12th November, 2013 – Around 150 Geographic Information System and Remote Sensing (GIS/RS) users and stakeholders from around the Pacific region will gather in Suva next week for the 2013 Pacific GIS/RS User Conference. The Conference runs from Monday 18th November to Friday 22nd November.

This year's theme of the conference is "Connecting the Pacific with Maps". Cutting edge advancements in GIS/RS technologies will be presented and discussed in-depth as well as an array of applications including the management of resources in small island Pacific nations.

GIS is a computer-based tool used to collect, combine and overlay information in the form of easily understood maps constructed from up-to-date satellite images and field data. Whereas, remote sensing is the collection of information from afar using sensors on aircraft, satellites, ships and other vessels. Together, the two can be used to make critical decisions about the physical and built environment.

The conference will be opened by Professor Michael Petterson, Director of Applied GeoScience and Technology Division, Secretariat of the Pacific Community (SPC).

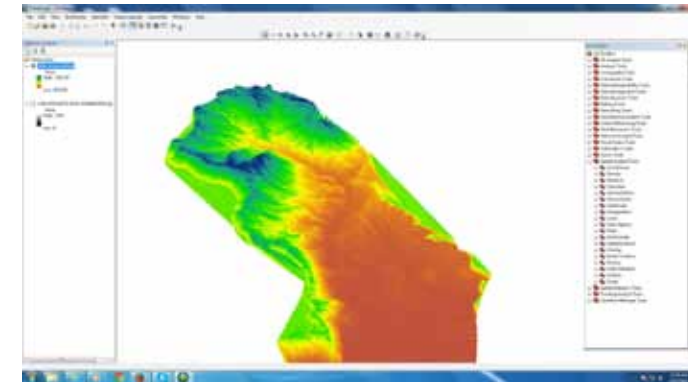
"SPC recognises the power and versatility of GIS and its ability to combine, synthesise, model and present disparate geographical data sets. The demand for GIS and its applications to Pacific Development

grows year on year. In a similar vein satellite and airborne data improves in quality and resolution at a frightening pace. The increasing usage of this powerful imagery and data allows rapid and accurate assessments of resources, land use, and environmental issues as never before. SPC is proud to be part of such a modern and forward looking meeting and welcomes all delegates to come and assist with the Pacific development agenda", Professor Petterson commented.

Current and upcoming trends in the geographic technology fields such as LiDAR (light detection and ranging), Unmanned Aerial Vehicles (UAV), recent progress in vegetation and land cover mapping, improvements in satellite technologies, applications in disaster reduction and climate change adaption, web mapping and open source software will be discussed during the conference.

The Pacific GIS/RS Conference has been held annually since its inception in 1999. Organisation of the Conference is voluntary and is overseen by the Secretariat of the Pacific Community, University of the South Pacific and the Fiji Department of Lands. Financial contributions from various departments of the Fiji Government, GIZ (Deutsche Gesellschaft für Internationale Zusammenarbeit), satellite data and GIS/RS software vendors has allowed the participation of Pacific Island nationals and partners at the Conference.

DTM shown was extracted from the Stereo pair imagery of the Sabeto Catchment, Nadi.



Coconut palms can be counted through a semi-automatic process on very high resolution image data



Field work



Satellite image data