

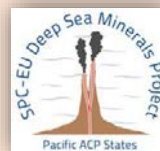


STAR 2016: The Pacific Islands Science, Technology and Resources Conference

SECOND CIRCULAR and CALL FOR PAPERS and REGISTRATIONS

STAR 2016 will occur on 6-8 June 2016. The conference will be held in Nadi, Fiji, at the Tanoa International Hotel.

The conference will be sponsored by the Geoscience Division of the Pacific Community (SPC). It will be conducted in conjunction with several workshops sponsored by the Deep Sea Minerals Project (a European Union funded project) within the Geoscience Division of SPC, the Circum-Pacific Council (CPC) and the New Zealand National Institute of Water and Atmospheric Research (NIWA). Several side events will also be conducted.



Conference Theme

The overall theme of the **STAR 2016** is:

“Geosciences, Geo-engineering and the Ocean in the Pacific Region”

STAR draws attention to opportunities for the PSIDS that can be realised from the new global Sustainable Development Goals (SDGs) for 2016-2030 in particular SDG14 on oceans. It provides a new focus for PSIDS in their national sustainable development agendas. PSIDS will need to develop targets that can be measured and tracked that are based upon good scientific principles and data and for which progress can be reported every 3 years.

Although the conference theme is broad, sessions will focus on the following four areas of prime importance to the Pacific Small Island Developing States (PSIDS) and the region.



Deep-sea Geoscience

This theme will concentrate on the resource potential and environmental and social monitoring and management issues that need to be determined in regard to deep-sea mineral resources in the EEZs of PSIDS and the Area (international seabed under the jurisdiction of the International Seabed Authority).



Science of Natural Hazards and Risks to Pacific Communities

This theme will concentrate on the underlying science and technological aspects that provides the basis for the reduction of risk from natural hazards and adaptation to climate change in PSIDS.



Land Use and Infrastructure at the Oceanic Interface on Pacific Islands

This theme will concentrate on the on-shore, coastal and nearshore areas of PSIDS and is expected to include examples of on-shore resources, soils, agriculture and the application of GIS and Remote Sensing to the on-shore, coastal and nearshore environment.



Renewable Energy Resources for Pacific Communities

This theme will draw together all aspects of renewable energy resources applicable to the PSIDS. Resources will include issues relating water, solar, wind, wave, OTEC (ocean thermal energy conversion), biological, and geothermal resources.

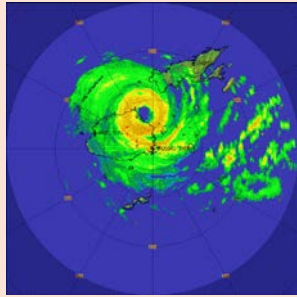


Papers on **any** topic related to the overall conference theme or the Pacific region will also be welcome and will be included in the **STAR 2016** Programme where possible.



Special Session

Following recent destructive tropical cyclones in the Pacific region, namely TC Pam - Vanuatu (2015) and TC Winston - Fiji (2016) it is proposed to have a special **STAR 2016** session “*Recent Severe Tropical Cyclones in the Region: Their Genesis and Effects on Pacific Communities*”. Papers and posters are invited for this session. It is expected



topics would include: meteorological aspects, local regional and post-event effects of recent severe cyclones and the connection to climatic instabilities due to climate change.



STAR 2016 Web Site

The **STAR 2016** Conference web site has been developed. It will include all information including circulars, conference programs. Important updates will also be provided on a regular basis. The web site can be accessed via the following link:

[STAR Network Web Site](#)

STAR 2016 Timetable

A detailed conference program will be available on registration, however, a tentative outline of planned events is provided below for your information:

Friday	29 April	Early-bird registrations and abstract submissions close
Friday	03 June	7 th Deep Sea Mineral Steering Group Meeting (closed session)
Saturday	04 June	Circum-Pacific Council/NIWA Deep Sea Minerals Workshop
	Evening	Welcome Icebreaker Reception
Sunday	05 June	
	Morning	CPC Director’s Meeting (closed session)
	Afternoon	Registrations
	Evening	Informal Meetings
Monday	06 June	
	Morning:	Registrations, Opening Session and STAR Sessions
	Afternoon	STAR Sessions
	Evening	Working Group Meetings
Tuesday	07 June	STAR Field Trip
Wednesday	08 June	
	Morning	STAR Sessions
	Afternoon	STAR Sessions conclude, STAR Business Meeting and Closing Session
	Evening	Conference Reception

Abstract Submission

Delegates intending to participate in **STAR 2016** are hereby invited to submit abstracts and an indication of whether it will be an oral presentation or a poster. Full details should be provided on the attached registration form.

Abstracts should be limited to 300 words and provided in MS-Word format.



Submit abstracts via email to redit.mlb@gmail.com (contact Lala Bukarau).

Early submission is strongly encouraged with an extended deadline of 29 April 2016.

Conference Format

Oral and Poster presentation sessions will be available during **STAR 2016**. However, there will be limited opportunities for oral presentations; therefore more than one poster per participant will be permitted.

Projection facilities will be available for presentations. It is planned that daily sessions will be held during the hours 09:00 – 12:30 and 14:00 – 17:30; over two days of the three-day event. Depending on the number of papers submitted, multiple sessions may be conducted.

Display boards will be available for presentation of posters. Posters may be displayed for the entire conference period.

Conference Publications

A **STAR 2016** Abstracts Volume will be provided to all delegates as part of the registration pack.

It is also intended to publish a **STAR 2016** Conference Proceedings Volume that will contain details of the presentations and poster papers.

Registration

Early registration for **STAR 2016** is strongly encouraged with the deadline being extended to 29 April 2016.

Registration fees for **STAR 2016** will be as follows:

- Delegate registrations received on/before 29 April 2016 \$FJ150.00
- Delegate registrations received after 29 April 2016 \$FJ200.00
- Registrations for Pacific Island Nationals \$FJ75.00
- Registrations for Students (currently enrolled in a tertiary Institution) \$FJ50.00

- Registration for the Field Trip
(anticipate all inclusive – payment to be made at conference) \$FJ250.00

Registration fees must be paid in advance and must be deposited into the bank account for **STAR 2016** and a copy of the bank transfer included with your registration details. Please ensure that you include reference to the Budget Code when making the transfer and provide a copy of the confirmation of transfer with your registration. Bank account details are provided below:

Account Name: SPC Main A/C
Account Number: 05360638
Bank: ANZ
Bank Address: ANZ House, Victoria Parade, Suva Fiji
BSB: 010890
SWIFT Number: ANZBFJFX (for use by overseas delegates)
Budget Code: GDDA09XS – STAR 2016 Conference

Registration fees will include morning and afternoon teas, working lunches as well as the Conference Reception.

A **STAR 2016** Registration Form is attached to this circular, please complete and return as soon as possible.



Immigration Requirements

As Fiji is a popular holiday destination entry is quite relaxed, however, visitors from most countries are issued with tourist visa on arrival. It is also advisable to check with your travel agent to confirm visa requirements before you depart.

Visitors will need a valid passport with at least 6 months validity and a valid return ticket.

Accommodation

The preferred **STAR 2016** accommodation provider is the Tanoa International Hotel, Votualevu Road, Nadi.



Accommodation bookings will be an individual responsibility for participants using the attached reservation form. However, please include a copy of your accommodation request with your registration details. Details of the Tanoa International Hotel can be found on their website through the following link:

[Tanoa International](#)

If you choose to select another accommodation option in the Nadi area it will be your individual responsibility to make your own accommodation arrangements at your selected hotel. Several hotels near the conference venue include:

Novotel - Nadi: Namaka Hill, Nadi. A short walk or taxi ride to the conference venue. Details can be found on their website on the following link:

[Novotel - Nadi](#)

Raffles Gateway - Nadi: Queens Road, Nadi, opposite to the entrance to Nadi International Airport and a short taxi ride to the conference venue. Full details can be found on their website through the following link:

[Raffles Gateway - Nadi](#)

Tokatoka Resort - Nadi: Queens Road, Nadi. Close to Nadi International Airport and a short taxi ride to the conference venue. Full details can be found on their website through the following link:

[Tokatoka Resort-Nadi](#)

Note that all hotels provide a free shuttle service to and from the airport. It is a good idea to provide flight details when making a booking.

Side Events

STAR Working Groups

Working Groups under the four focal areas (or others depending on interest) will be convened during **STAR 2016** to facilitate discussion on specialist topics and issues important to the region. Working Group details will be provided in registration packs on arrival.

Any participants wishing to recommend the conduct of a Working Group should indicate this on the registration form.

7th Deep Sea Minerals Steering Group Meeting (Closed Session)

The 7th steering committee meeting of the SPC-EU Deep Sea Minerals (DSM) Project will be held prior to **STAR 2016**. Considering that the DSM Project will conclude in December 2016, this will also be the last steering committee meeting of the steering Committee for the Project. Representatives of each of the fifteen Pacific ACP States will be invited to attend. Additionally, a representative each of the European Union (EU) and the Regional Authorising Officer (RAO) will also be invited to attend. The meeting will be chaired by Prof Mike Petterson, Director of the Geoscience Division (GSD) of SPC.

Presentations will provide updates on Project activities, and the challenges encountered, collaboration with partners, as well as the project work plan and budget for the current year. The major project achievements in the last 5 years will also be highlighted. Participants are expected to deliberate on and approve the 2016 work plan and budget. Representatives of Pacific ACP States will be asked to give a brief presentation on the DSM activities in their respective countries.

Circum-Pacific Council – NIWA – Deep Sea Minerals Workshop

This workshop is intended to brief participants with up-to-date information on the status of DSM, current thinking about approaches to DSM activities, and international experience with methods, environmental awareness and policy for future DSM activities.

The key objectives of the workshop are to present the various environmental issues and concerns associated with deep-sea mining, with a particular focus on the south-west Pacific region, and discuss the actions taken or envisaged by states and the international community to respond to these. The following key questions will be addressed:

1. What are the **environmental issues** related to DSM activities?
2. How can **marine scientific research** provide information that is most appropriate to the advancement of exploration and exploitation of deep-sea minerals?
3. What **recommendations** should be given by the workshop participants to states and organisations considering DSM activity?

Further information can be found on the CPC website through the following link:

[CPC-STAR-NIWA DSM Workshop](#)

Conference Field Trip

An intra-conference field trip has been planned for Tuesday 07 June to take in some of the spectacular geology of Waya Island and nearby islands in the Yasawa Group. The cost will be \$FJ250.00 per person, to be paid at the meeting. Participation in this trip will be limited to a max of 35 persons. The planned trip will take a full day with visits to areas where the geological structure and features is unmatched elsewhere in Fiji. You will see the dip slope of Vatunareba on Waya rising to heights greater than 500m, the large pillow lavas of the Dakadaka Basalt, a submarine slide with deformed bedding in the dacitic tuff producing a dramatic concertina effect and the inter-bedding of basalt and red limestone of the Eori Basalt.



For the less adventurous a day trip on the Yasawa Explorer/Flyer will take in the beauty of the Yasawa Islands comes highly recommended. It departs from the Marina at 08:30 returning at about 17:45 at \$FJ205 for adults and \$FJ100 for children. This cruise includes a packed lunch, with refreshments and snacks available for purchase on board. For more details visit the

Yasawa Explorer web site at the following link:

[Yasawa Islands Explorer](#)

Other Activities

Denarau Island Tourist Precinct



Denarau Island is the largest integrated resort in the South Pacific region. It is located less than 10 kms from Nadi Town and is a short (15 min) taxi trip from the Tanoa International, and it boasts eight large resorts, stunning beaches and an 18-hole championship golf

course and a restaurant and shopping precinct.

There are excellent restaurants at the marina, mostly sited right on the waterfront. There are menus to suit all



tastes, with steakhouse dining alongside Indian and Asian cuisine cooked by local and imported chefs. Of course, excellent seafood is also a



feature, fresh caught and cooked in a range of styles, simple or fancy. Many restaurants are family friendly with kid's menus and children's tables, and the views of the busy marina make the sunset a popular time to enjoy a glass of something by the water, and watch the sun go down.

Various boat trips and cruises to the Yasawas and other island destinations can be arranged through the various companies that operate out of the marina.

Nadi Town

If you prefer less expensive and a more traditional shopping environment, a visit to Nadi Town is worthwhile.

It is a short (about 15 mins) taxi trip from the Tanoa International. It is a bustling regional centre that has considerable variety from souvenir shops, numerous clothing stores and many local cafes and restaurants. Many traditional stores are also located here.



Nadi Town has undergone several severe floods in recent years but has bounced back very quickly, very few effects of recent floods are

noticeable when walking down the main street. Be sure to visit the temple at the southern end of the main street.



Garden of the Sleeping Giant



If orchids are your favourite flowers, then *The Garden of the Sleeping Giant* is the place for you to visit.

It is a short (about 15 mins) taxi trip from the Tanoa International and is nestled in a small valley north of Nadi. View their extensive collection of beautiful orchids and other tropical plants and walk through the extensive tropical gardens that are highlighted by several lily-covered ponds. For more details visit their web site:

[Garden of the Sleeping Giant](#)

There are many other activities that can be enjoyed in the Nadi area or on the Coral Coast. For details please consult the numerous available travel web sites and the Tanoa International tour desk will be able to provide information should you require it.

The **STAR 2016** Steering Committee would like to take this opportunity to thank you for your interest in **STAR 2016** and we hope that you enjoy the conference and the delights that Fiji has to offer.

Vinaka



[The island motif used here is a reproduction of a Samoan Siapo runner. Individual motifs are based on the hibiscus flower. Image downloaded from the "Tapa Cloths from the Pacific and Artwork" website: www.tapapacifica.com, accessed 10 December 2015. The use of the image is gratefully acknowledged.]



STAR 2016 REGISTRATION FORM

A. Registration Details

Name:	
Mailing Address:	
Telephone:	
Email:	
Fax:	
Organisation:	

I will be attending:	
	DSM Project Steering Group Meeting (03 June)
	CPC/NIWA Deep Sea Mineral Workshop (04 June)
	STAR 2016 Conference (06 & 08 June)
	Conference Field Trip (07 June)(payment to be provided at conference)
	Conference Registration and payment details attached

B. Conference Contributions

Title of Paper(s):	
Author(s):	
Institutional Affiliation(s):	
Presentation Mode:(Oral or Poster):	
Presenter(s):	
I am interested in participating in	Working Group(s)
I would be interested in assisting to establish a Working Group on the following topic:	

Please email or fax completed registration forms to:

STAR 2016 Steering Committee

Attention: Ms Lala Bukarau

Email: redit.mlb@gmail.com

Fax: (+ 679) 347 9661

STAR Website: <http://gsd.spc.int/star/>



ACCOMODATION RESERVATION FORM

DSM CPC STAR MEETING 3, 4, 6-8 June 2016

Reservations will be processed by completing this form
 Tel: +679 672 0277 or Fax: +679 672 0191 or Email: reservations@tanoahotels.com

Surname:		First Name:	
Arrival Date:		Departure Date:	
Arrival Flight Details:		Departure Flight Details:	
Number of Rooms:		Telephone:	
Email Address:		Facsimile:	

Single Superior with Full Breakfast FJ\$175.00 per night	Single Executive with Full Breakfast FJ\$205.00 per night
--	---

Terms & Conditions:

- The above rates are valid for Single Superior and Single Executive Rooms and are inclusive of all required government taxes. Any breakfast charges of (extra) person/s beyond the above rates will be charged at prevailing retail rates. For bookings to be confirmed, advance payment or a guarantee will be required.
- The Hotels check-in time is 2.00pm and checkout time 11am respectively. (Early Check-in and Late Check-out will be subject to room availability and surcharges.
- Any earlier arrival in the morning will be counted as a pre-registration and a full night accommodation rate is applicable
- Cancellation Policy:
 - Less than 7 days – One night room charge will be applied
 - No-Show or Cancellation on the arrival day – Full Charge for the whole duration will be levied
- Free courtesy transport is provided to and from the Nadi International Airport.

Credit Card Guarantee:

	VISA	MASTER	AMEX
Credit Card Number:			
Expiry Date:			
Credit Card Holder Name:			
Signature:			

FOR HOTEL USE ONLY:

BOOKING ID:	CONFIRMED	WAITLISTED
--------------------	------------------	-------------------

Confirmation Number: _____

Acknowledged By: _____ **Date:** _____